



STANDBY 375 kW CONTINUOUS 375 kW

60 Hz

Caterpillar is leading the power generation marketplace with Power Solutions engineered to deliver unmatched flexibility, expandability, reliability, and cost-effectiveness.

FEATURES

FULL RANGE OF ATTACHMENTS

- Wide range of bolt-on system expansion attachments, factory designed and tested

SINGLE-SOURCE SUPPLIER

- **Fully Prototype Tested** with certified torsional vibration analysis available

WORLDWIDE PRODUCT SUPPORT

- Worldwide parts availability through the Caterpillar dealer network
- With over 1,200 dealer outlets operating in 166 countries, you're never far from the Caterpillar part you need.
- 99.5% of parts orders filled within 48 hours. The best product support record in the industry.
- Caterpillar dealer service technicians are trained to service every aspect of your electric power generation system.
- Preventive maintenance agreements
- The Cat Scheduled Oil Sampling (S•O•SSM) program cost effectively detects internal engine component condition, even the presence of unwanted fluids and combustion by-products



CAT® G3412C LE GAS ENGINE

- Reliable, rugged, durable design
- Field-proven in thousands of applications worldwide
- Low pressure gas



CAT SR4B GENERATOR

- Designed to match performance and output characteristics of Caterpillar engines
- Optimum winding pitch for minimum total harmonic distortion and maximum efficiency
- Segregated AC/DC, low voltage accessory box provides single point access to accessory connections



CAT CONTROL PANELS

- Two levels of controls, designed to meet individual customer needs:
 - EMCP II provides digital monitoring, metering, and protection
 - EMCP II+ provides EMCP II features along with full-featured power metering and protective relaying



FACTORY INSTALLED STANDARD & OPTIONAL EQUIPMENT

System	Standard	Optional
Air Inlet	Single element canister type air cleaner Service indicator	
Cooling	Radiator with guard Coolant drain lines with valves Fan and belt guards Caterpillar Coolant Low coolant level sensors	Jacket water coolant heater with shutoff valves Radiator removal
Exhaust	Stainless steel exhaust flex with weld outlet flange	15 dBA muffler
Fuel	Gas pressure regulator Low pressure fuel system Energize To Run (ETR) gas shutoff valve	
Generator	Self excited Class H insulation Class F temperature rise (105° C continuous/130° C standby) VR6 Voltage Regulator, 3-phase sensing, with reactive droop 2:1 Volts/Hz or 1:1 Volts/Hz Bus bar termination Extension box	Permanent magnet excited Digital Voltage Regulator Digital Voltage Regulator with KVAR/PF control Anti-condensation space heater Oversize & premium generators Circuit breakers, UL, 3 pole with shunt trip Multiple breaker capability
Governor	2301A speed control with EG3P actuator	Electronic load sharing
Ignition	Electronic Ignition System (EIS)	
Control Panels	EMCP II	EMCP II+ Customer Communication Module Local alarm & remote annunciator modules
Lube	Lubricating oil and filter Oil drain line with valve Fumes disposal	Manual sump pump
Mounting	Wide base Linear vibration isolators between base and engine-generator	
Starting/Charging	35 amp charging alternator 24 volt starting motor Batteries with rack and cables Battery disconnect switch	Battery chargers, 5 & 10 amp Oversize batteries
General		Automatic Transfer Switches (ATS) Floor standing circuit breakers

SPECIFICATIONS



CAT SR4B GENERATOR

Frame..... 592
Type Self excited, static regulated, brushless
Construction Single bearing, close coupled
Three phase 12 lead reconnectable
Insulation Class H with tropicalization and antiabrasion
IP rating Drip proof 22
Alignment..... Pilot shaft
Overspeed capability
 Prototype tested 150%
 Production tested 125%
Wave form..... Less than 5% deviation
Paralleling capability..... Standard
Voltage regulator 3-phasing sensing with Volts-per-Hertz
Voltage regulation Less than ± 1/2% (steady state)
 Less than ± 1% (no load to full load)
Voltage gain Automatic
Telephone Influence Factor (TIF)..... Less than 50
Harmonic Distortion (THD) Less than 5%



CAT ENGINE

G3412C LE, 4-stroke-cycle, SCAC
Bore – mm (in) 137 (5.4)
Stroke – mm (in) 152 (6.0)
Displacement – L (cu in) 27.0 (1649)
Compression ratio 11.4:1
Aspiration Turbocharged-Aftercooled
Ignition system Cat Electronic Ignition (EIS)
Governor type Woodward 2301A



CAT CONTROL PANEL

24 Volt DC Control
NEMA 1, IP22 enclosure
Electrically dead front
Lockable hinged door
Generator instruments meet ANSI C-39-1
Terminal box mounted
Single location customer connector point

Consult your Caterpillar dealer for available voltages.

TECHNICAL DATA

Open Generator Set — 1800 rpm/60 Hz/480 Volts			Standby DM5443		Continuous DM5444	
Package Performance						
Power rating		ekW	375		375	
Power rating @ 0.8 PF		kVA	469		469	
Aftercooler temperature	Deg C	Deg F	54	130	54	130
Fuel Consumption						
100% load with fan	N•m³/hr	scf/hr	137	5141	137	5141
75% load with fan	N•m³/hr	scf/hr	108	4062	108	4062
50% load with fan	N•m³/hr	scf/hr	78	2942	78	2942
Cooling System						
Ambient air temperature*	Deg C	Deg F	40	105	40	105
Air flow restriction (system)	kPa	in water	0.12	0.5	0.12	0.5
Air flow (maximum @ rated speed for standard radiator arrangement)	m³/min	cfm	1430	50,491	1429	50,491
Engine coolant capacity with radiator	L	Gal	140	37	140	37
Jacket water outlet temperature	Deg C	Deg F	99	210	99	210
Exhaust System						
Combustion air inlet flow rate	N•m³/min	scfm	36	1307	36	1307
Exhaust gas stack temperature	Deg C	Deg F	371	700	371	700
Exhaust gas flow rate	N•m³/min	cfm	37	3125	37	3125
Exhaust flange size (internal diameter)	mm	in	203	8	203	8
Exhaust system backpressure (maximum allowable)	kPa	in water	6.7	27	6.7	27
Heat Rejection						
Low Heat Value (LHV) fuel input	kW	Btu/min	1386	78,809	1386	78,809
Heat rejection to jacket water (includes oil cooler)	kW	Btu/min	457	25,983	457	25,983
Total heat rejection to exhaust (LHV to 25° C)	kW	Btu/min	334	19,001	334	19,001
Heat rejection to exhaust (LHV to 120° C)	kW	Btu/min	220	9665	220	9665
Heat rejection to A/C	kW	Btu/min	64	3659	64	3659
Heat rejection to atmosphere from engine	kW	Btu/min	55	3152	55	3152
Heat rejection to atmosphere from generator	kW	Btu/min	29	1660	29	1660
Generator						
Motor starting capability @ 30% voltage dip**		kVA	928		928	
Frame			592		592	
Temperature rise		Deg C	130		105	
Emissions***						
NOx		g/bhp-hr	2		2	
CO		g/bhp-hr	1.9		1.9	
HC (total)		g/bhp-hr	5.4		5.4	
HC (non-methane)		g/bhp-hr	0.81		0.81	
Exhaust O ₂ (dry)		%	8.7		8.7	

*Ambient capability at 200 m (660 ft) above sea level. For ambient capability at other altitudes, consult your Caterpillar dealer.

**Assumes synchronous driver

***Emissions data measurement is consistent with those described in EPA CFR 40 PART 89 SUBPART D and ISO 8178-1 for measuring HC, CO, CO₂ and NOx. Data shown is based on steady state engine operating conditions of 77° F, 28.43 inches HG and fuel having a LHV of 920 BTU per cubic foot at 30.00 inches HG absolute and 32° F. Not to exceed emission data shown is subject to instrumentation, measurement, facility and engine fuel system adjustments.

RATING DEFINITIONS AND CONDITIONS

Standby — Output available with varying load for the duration of the interruption of the normal source power.

Continuous — Output available without varying load for an unlimited time.

Ratings are based on ISO3046/1 standard reference conditions of 25° C (77° F) and 100 kPa (29.61 in Hg).

Ratings are based on pipeline natural gas having a LHV (low heat value) of 36.2 mJ/N•m³ (920 Btu/cu ft). Variations in altitude, temperature, and gas composition from standard conditions or the use of a three way catalyst may require a reduction in engine horsepower.

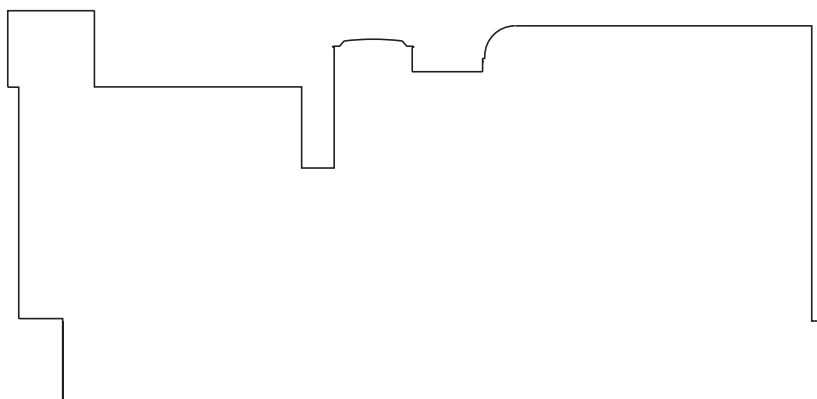
S T A N D B Y 3 7 5 e k W
C O N T I N U O U S 3 7 5 e k W
6 0 H z



STANDBY/CONTINUOUS POWER GENERATOR SET PACKAGE — TOP VIEW



STANDBY/CONTINUOUS POWER GENERATOR SET PACKAGE — SIDE VIEW



Package Dimensions		
Length	4540 mm	178.74 in
Width	2238 mm	88.11 in
Height	2678.5 mm	105.45 in
Shipping Weight	6356 kg	14,000 lb

Note: Do not use for installation design.
See general dimension drawings
for detail (Drawing #207-4503).

www.CAT-ElectricPower.com

TMI Reference No.: DM5443, DM5444

U.S. sourced

LEHE1432 (06-01)

© 2001 Caterpillar
All rights reserved.
Printed in U.S.A.

Materials and specifications are subject to change without notice.
The International System of Units (SI) is used in this publication.